

NEW ZEALAND CHRISTIAN  
COUNSELLORS ASSOCIATION



NZCCA

# **NEW ZEALAND CHRISTIAN COUNSELLORS ASSOCIATION**



**NEWSLETTER**

**JUNE 2011**



## CONTENTS:

- NZCCA CHAIRPERSON'S REPORT
- EXECUTIVE OFFICERS REPORT
- GOD DEFEND NEW ZEALAND
- WORD FROM RAEWYN DIPROSE
- PRICE LISTS
- MEMBERSHIP COMMITTEE DATES
- STUDENT NEWS
- CONFERENCE COMMENTS
- PRACTICE TIPS : BUILDING A CLIENT BASE
- ETHICS CORNER
- MEMBERSHIP
- ACC
- WELCOME TO NEW MEMBERS , AFFILIATES & STUDENT ASSOCIATES
- BOOK REVIEW: **CONTEMPLATIVE VISION, A GUIDE TO CHRISTIAN ART AND PRAYER; JULIET BENNER**
- BRANCH & REGIONAL REPORTS
  - ✓ NORTHLAND
  - ✓ AUCKLAND
  - ✓ WAIKATO
  - ✓ GISBORNE
  - ✓ BAY OF PLENTY
  - ✓ MANAWATU
  - ✓ WELLINGTON
  - ✓ CANTERBURY
  - ✓ NELSON

## CONTACT DETAILS

Executive Officer:  
Adrienne Hunt

Office:  
13 Maidstone Street  
Ponsonby  
Auckland 1021

Postal:  
P O Box 68773 Newton  
Auckland 1145

Phone:  
09-361-4183

Email:  
[info@nzcca.org.nz](mailto:info@nzcca.org.nz)

Website:  
[www.nzcca.org.nz](http://www.nzcca.org.nz)

Office Hours:  
Mon – Fri / 9am – 2pm

- CLASSIFIEDS

- ✓ SPIRITUAL GROWTH MINISTRIES
- ✓ WORKING WITH YOUNG PEOPLE WHO ARE QUESTIONING THEIR SEXUAL IDENTITY
- ✓ FUNDRAISING OPPORTUNITY – LIZ MALUSCHNIG
- ✓ BOOK: DYING: A NEW ZEALAND GUIDE FOR THE JOURNEY
- ✓ WORKSHOP: RELATIONSHIPS ARE TRICKY: INTRODUCING THE SEXUAL ETHICS FRAMEWORK
- ✓ BOOKS: DISTRESS TO DE-STRESS & IN PURSUIT OF AWARENESS
- ✓ CIRCLE OF SECURITY DVD TRAINING

- INCLUDED IN ENVELOPE:

- ✓ DIRECTORY INFO FORM FOR MEMBERS
- ✓ COPY OF NEW RULES OF THE ASSOCIATION
- ✓ ACC PROVIDER UPDATE

## CHAIRPERSONS' REPORT

Greetings to you all

This being the first newsletter since our annual conference it is appropriate to reflect on our time together. Personally I really valued the opportunity to meet old and new friends. I appreciate the camaraderie and encouragement that comes from meeting together. I know from the feedback sheets that many of you felt the same. I valued David Williams' input from his theological position. I think he gave us much food for thought that was relevant to our professional and personal lives. The challenge for all of us is to take his thoughts and apply them to our work context in a way that outworks professional Christian counselling. The Exec sees conference as an opportunity for speakers to bring differing but relevant perspectives on the counselling world, knowing that conference attendees will resonate with speakers to varying degrees.

We really appreciate those who facilitated workshops at the conference, especially those who came from Christchurch to do so.

I also found it very encouraging to hear again the history of the Association. It is easy to get submerged in the issues of now, and forget where we have come from. Thank you, Charlotte, for your involvement over the years, and your contribution to the conference.

## EXECUTIVE COMMITTEE

Chairperson:  
Andrew Smith (Co-opted)

Membership Committee  
Chair:  
Froukje Spaak

Ethics Committee Chair:  
Joyce Carswell

Student Rep (Co-opted):  
Scott Douglas

Executive Officer:  
Adrienne Hunt

Paulette Berryman

Suzanne Barthow

Kathy Clist

Bruce McFadyen

Christine de Senna

It was good to be able to recognise Richard Charmley's input into the Association over many years and in different capacities by awarding him Life Membership of the Association. Again, thank you Richard.

From the AGM, we farewell Helen Torr and Raewyn Diprose from the Executive Committee. We appreciate the input of both Helen and Raewyn and know that they have invested much in us as a committee and the Association as a whole.

In farewelling Helen and Raewyn, we welcome Christine de Senna from Christchurch, and Suzanne Barthow from Tauranga on to the Executive. We look forward to seeing how their involvement will develop over the next period of time. Welcome to you both, and thank you for being willing to give your time and expertise in this way.

As those of you who were at the conference will know, there have been some changes of plan in terms of the registration/self regulation process. The group that has been meeting (from across the professional bodies) has moved back to deciding to submit a proposal for registration to the Minister of Health. It is likely that this will happen in the near future. The feeling of those at conference was generally in favour of this move. We will endeavour to keep you up to date with the process as it unfolds – but feel free to email Adrienne or any exec member if you have thoughts or questions about the process.

At conference we paid special tribute to our Christchurch members in the light of the situation there. I am writing this on the 15<sup>th</sup> June, with the recent on-going aftershocks fresh in our awareness. We continue to pray for and support those of you who are affected in any way by the on-going uncertainty of Canterbury life. Kia kaha!

As noted in the 2010 annual report, and at conference. The Exec is moving to change the way we work, specifically to separate governance and management. As we are growing the historical way of working that has Exec covering both the big picture and the small print of planning is simply not sustainable. Our plan is that by the end of the year the Executive will focus on the governance 'bigger picture' issues. Each Exec member will have a clear portfolio of responsibility, and will report to Exec meetings on that portfolio. Each portfolio will have a working group (sub-committee) associated with it, or will function via more of a network.

The portfolios we envisage are:

- Chairperson
- Membership
- Ethics and complaints
- Management, finance and funding
- Student rep
- Regional liaison and development
- PR including conference, journal, promotions
- ACC

and possibly a Bi-cultural development portfolio.

Our next task is to develop profiles for the Exec portfolios and for the group/ sub-committee associated with each.

We envisage that the sub-committees will be constituted by a process of: advertising for the roles → applications and nominations → decisions by the Exec on the make-up of each group → seeking comment from the membership → ratification by the Exec.

We believe that this will

- significantly strengthen the forward looking / vision casting role of the Exec,
- enable more people within the Association to contribute from their areas of strength, and
- streamline some of our administrative processes.

We welcome any thoughts or questions that you might have as we move forward.

On behalf of the Exec, I pray that we will all know the grace and power of our Father in

The NZCCA Newsletter is produced by the New Zealand Christian Counsellors Association and distributed free of charge to Members, Student Associates and Affiliates of the Association as well as to the campuses of Universities & Training Institutions with counselling students.

Whilst it contains information and news items about the Association and related issues, opinions expressed in the newsletter are not necessarily those of the Association. The inclusion of courses, advertising or enclosures does not necessarily indicate NZCCA support for the content.

The newsletter is distributed quarterly at the end of February, May, August and November

Heaven as we seek to work with colleagues, clients, supervisors, supervisees, students – whom have I forgotten?

Best wishes

**Andrew Smith**

---

## **EXECUTIVE OFFICER'S REPORT**

Since I wrote my last newsletter column only three months ago, New Zealand has continued to face challenges from weather, earthquakes and Chilean volcanoes. These events act as reminders that we are not in control of our own destinies not matter what we may think. For all our technological, medical and scientific advances the ultimate control is not ours.

### **Invoices and Annual Practice Review Forms (for members)**

**Members** need to remember that for your membership to be renewed you **must** pay your fees **and** submit an acceptable Annual Practice Review. Failure to meet either of these criteria will result in the suspension of your membership with the Association. You will then be allowed a further 30 days when ongoing failure to meet these requirements will result in your membership being cancelled.

For those who are paying their fees over six months; ½ of your fees must be paid by 30 June 2011.

***As noted in the March newsletter: the Annual Practice Review year is now the calendar year i.e. for 1 January – 31 December 2010.***

**Affiliates and Student Associates** should have paid their subscriptions by 30 June 2011 or their subscriptions will be cancelled.

### **Directory**

Included with this newsletter are the directory update forms for members. Please check that the information we have on record is correct including your non published home phone number and your email address. You also need to indicate if you want to be included in the newsletter – if you do not return your directory form or if you do not tick yes in the appropriate boxes, you will not be included in the website or printed directory.

There are also boxes on the directory form to allow you to indicate if you are interested in being involved areas within the Association. This involvement can take on many forms so please do not .

### **Conference 2011**

Conference 2011 was a wonderful success. Holiday Inn Auckland Airport proved to be a great venue for the conference. Their staff were willing and available. The venue itself provided many places to catch up with old and meet new friends and colleagues, with poolside dining for those wanting to take advantage of the wonderful weather Auckland turned on. The meeting room ended up being a little cramped, which begs the question on whether we may need to limit conference numbers in future.

I am also thankful for Manna Christian Bookstore who come to conference each year at no cost to us as an Association and offer us material at discounted prices. Where possible they endeavour to provide material around the conference theme.

Later in the newsletter I have included some of the comments from the evaluation forms completed at the end of conference. These forms are a valuable tool for ensuring that future conferences continue to meet the needs of the members and non members alike. As an Executive we wrestle with how to meet the needs of all who attend but we are aware that the old adage 'you can't please all the people all of the time' continue to be true. However, even though there were positive and negative comments, on the most part those of you who attended had a good experience.

Before conference we as an Executive were conscious that many of our members were directly and indirectly affected by the events in Christchurch. The need to move our conference from Christchurch to another venue was one aspect of this. We wanted our conference in some way to reflect our support and acknowledge the difficulties in Christchurch and hence we opted this year to make our banquet a little more low key and reflective.

We also used the National Anthem as the basis of our worship for conference, a prayer to God to protect our nation and all who dwell in her. For your reflection I have included the words in both of the languages of our nation below.

## **Rules of the Association**

Included with this newsletter is a copy of the new revised Rules of the Association. These rules were adopted by the AGM at Conference. Please read them to familiarise yourself with the changes.

## **Support for Christchurch**

During the conference banquet we offered the opportunity for people to make donations towards NZCCA Christchurch who will use these donations to help support the counsellors in the Christchurch region. If you were not at the banquet and would like to make a donation towards NZCCA Christchurch you can make a deposit directly into their account: ASB Ponsonby : 12 3012 0806750 03

## **Executive Honorarium**

Both last year and this year an Honorarium has been included in the budget. Where previously this had been made available to the Chairperson, at our last Executive Meeting it was agreed that the honorarium be spread equally over the full Executive. The payment equates to \$60 per month per Executive Committee member.

Christchurch continues to remind us of how little control we actually have. At times like this it is good to have promises to encourage us:

“Do not fear, for I have redeemed you;  
I have summoned you by name; you are mine.  
<sup>2</sup> When you pass through the waters,  
I will be with you;  
and when you pass through the rivers,  
they will not sweep over you.  
When you walk through the fire,  
you will not be burned;  
the flames will not set you ablaze.  
<sup>3</sup> For I am the LORD your God,  
the Holy One of Israel, your Saviour;  
*Isaiah 43: 1b – 3a*

**Adrienne Hunt**



# God Defend New Zealand

God of Nations at Thy feet,  
In the bonds of love we meet,  
Hear our voices, we entreat,  
God defend our free land.  
Guard Pacific's triple star  
From the shafts of strife and war,  
Make her praises heard afar,  
God defend New Zealand.

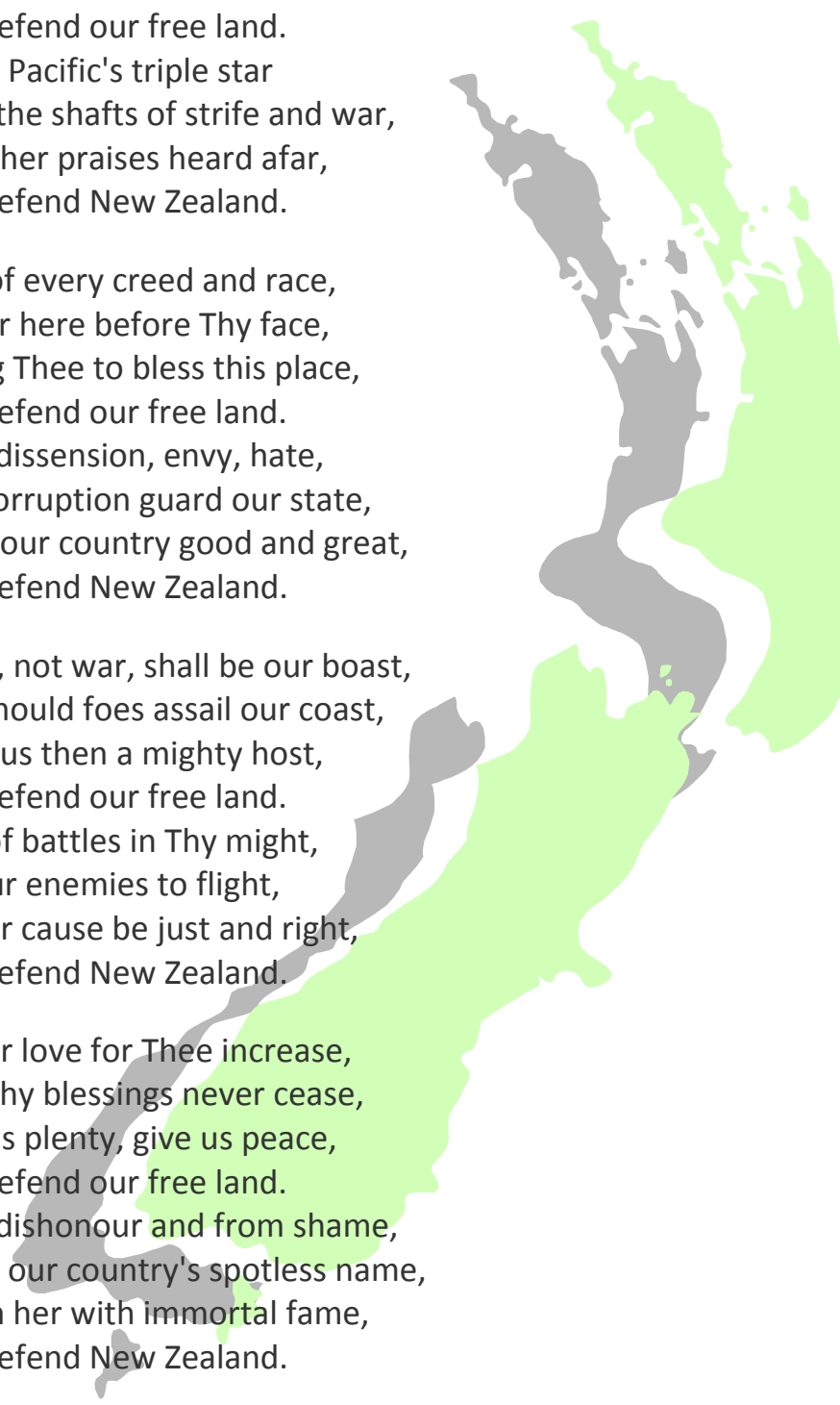
Men of every creed and race,  
Gather here before Thy face,  
Asking Thee to bless this place,  
God defend our free land.  
From dissension, envy, hate,  
And corruption guard our state,  
Make our country good and great,  
God defend New Zealand.

Peace, not war, shall be our boast,  
But, should foes assail our coast,  
Make us then a mighty host,  
God defend our free land.  
Lord of battles in Thy might,  
Put our enemies to flight,  
Let our cause be just and right,  
God defend New Zealand.

Let our love for Thee increase,  
May Thy blessings never cease,  
Give us plenty, give us peace,  
God defend our free land.  
From dishonour and from shame,  
Guard our country's spotless name,  
Crown her with immortal fame,  
God defend New Zealand.

May our mountains ever be  
Freedom's ramparts on the sea,  
Make us faithful unto Thee,  
God defend our free land.  
Guide her in the nations' van,  
Preaching love and truth to man,  
Working out Thy glorious plan,  
God defend New Zealand.

E Ihowā Atua,  
O ngā iwi mātou rā  
Āta whakarangona;  
Me aroha noa  
Kia hua ko te pai;  
Kia tau tō atawhai;  
Manaakitia mai  
Aotearoa  
Ōna mano tāngata  
Kiri whero, kiri mā,  
Iwi Māori, Pākehā,  
Rūpeke katoa,  
Nei ka tono ko ngā hē  
Māu e whakaahu kē,  
Kia ora mārire  
Aotearoa  
Tōna mana kia tū!  
Tōna kaha kia ū;  
Tōna rongō hei pakū  
Ki te ao katoa  
Aua rawa ngā whawhai  
Ngā tutū e tata mai;  
Kia tupu nui ai  
Aotearoa  
Waiho tona takiwā  
Ko te ao mārama;  
Kia whiti tōna rā  
Taiāwhio noa.  
Ko te hae me te ngangau  
Meinga kia kore kau;  
Waiho i te rongō mau  
Aotearoa  
Tōna pai me toitū  
Tika rawa, pono pū;  
Tōna noho, tāna tū;  
Iwi nō Ihowā.  
Kaua mōna whakamā;  
Kia hau te ingoa;  
Kia tū hei taurira;  
Aotearoa



## From Raewyn Diprose – 14 June 2011

I would like to take this opportunity to thank everyone who has been so supportive of me over the many years of involvement on the NZCCA Executive. It has been such a privilege to be a part of the Executive and also to see the Canterbury NZCCA and South Island Membership grow to a vibrant group of wonderful colleagues and friends. I am so delighted that Christine de Senna has been elected on to the Executive and I look forward to enjoying supporting her and the other members down here in the South. A word of thanks also for the wonderful gesture extended to the Christchurch Membership at Conference - the offers of billets and the donations made to be used to benefit the members following the earthquake in February. All the more appreciated after the events of yesterday with the awful shakes we have had again. I look forward to my ongoing contact with NZCCA in the South and throughout New Zealand. Thank you so much for being who you are!

**Raewyn Diprose**



### PRICING FROM 1 JULY 2011 – 30 JUNE 2012

Description	GST Ex	New Inc GST
Additional Directories	\$5.00	\$5.75
Advertising	\$47.83	\$55.00
Application Fee	\$78.26	\$90.00
Membership Fee	\$282.61	\$325.00
After 1 January	\$183.70	\$211.25
After 1 April	\$127.17	\$146.25
Membership on Hold with benefits	\$133.33	\$150.00
Affiliate Subscription	\$133.33	\$150.00
After 1 January	\$84.78	\$97.50
After 1 April	\$58.70	\$67.50
Student Associate Subscription	\$43.48	\$50.00
Interview	\$275.00	\$316.25

## 2011 Membership Committee Meeting Dates

The Membership Committee and Executive will be meeting on the following dates to consider membership applications next year. To be considered at one of these meetings your application must reach the NZCCA office at least 21 days prior to the meeting.

August 19

October 28

December 2

### **STUDENT NEWS**

It has been amazing to see that as a nation we have pulled together to help those that are in need in Christchurch. Thanks to all of you who were able to make it to the May conference I'm sure that you got a lot out of it. Conference was a brilliant time with Dr Dave Williams, Suffering Hope and Healing being the subject. His academic, theological approach was received with mixed response and was a fresh and honest reflection of Dave's personal journey. The workshops that were on offer were also delivered and received well. It was a thoroughly enjoyable time and a pleasure to be a part of the whole event. I encourage you to register for next year (or at least start saving for next year) which will be held in Wellington.

As well as the conference, NZCCA are putting together an E Journal. We are looking for contributors for this. This is an opportunity for you to submit, literature reviews, research, book reviews, and articles that you have written for assessment or projects or even personal interest research that is in the counselling arena. Submit an edited version of your work to the student rep email and it will be passed onto the editor of the E Journal. This is a chance to be published and to be in the first ever New Zealand Christian Counsellors Association E Journal.

In some recent reading I have been doing I have been challenged in the area of fear and self esteem; this is a snapshot that I would like to share with the students who are getting into their client hours and developing their counselling skills and those about to launch into this.

Remember to seek the face of the Lord in all that you are doing. Don't let fear overtake you in your practice. Being in training as a counsellor is a great place to look into the stuff that has happened in our past, and how it has affected our now. Looking at this is essential in developing who we are, why we are us, and how to step into our future as who we want to be. Helping others to realise this is a great honour and privilege. Don't be afraid of who God is calling you to be.

The enemy wants to sabotage us from realising our full God given potential. Recently I have been reading a book Healing for Damaged Emotions (David A Seamands) where it discusses Satan's Deadliest Weapon, our self esteem. The most powerful weapon David writes is attacking this.

Low self esteem attacks us in 4 different ways; the first it paralyses our potential, second; it destroys our dreams, third; it ruins our relationships, and fourth; it sabotages our Christian service.

If we let this attack of our confidence as counsellors come into our thoughts and practice then who knows what opportunities may be missed?

Imagine what may have been if Ananias in Acts 9 had let low self esteem play in his life, He may not of understood his potential in God, he may not of recognised his dreams, he may of not had the strong relationship he had with God and other believers, and if he had not served, touched Saul's eyes fulfilling what God had told him. What might the story of looked like...

God called to Ananias in a dream, "Go to where Saul is praying, for he has been told in a vision that a man Called Ananias will heal his sight". Ananias crippled by low self esteem said "Lord I don't think I'm that man. I am nothing in my own sight so I am nothing in your sight also". Then the Lord said to Ananias "Go! This man is my chosen instrument" Ananias who didn't believe in his dreams woke and carried on in his usual ways.

What a different outcome, what might of Saul's' life looked like form that moment on, what might the Bible look like what about the lives that would not of been impacted by Paul or his teachings, letters and the ongoing impact this man's life and revelation has had right up until today and into the future.

I want to encourage you and to say keep at it, be strong and know that you are doing a training that will impact not only your life, the life of the people around you and give us the amazing opportunity to be a person that can offer support and healing to the lives of those who will be in front of us in the counselling room.

Remember as a student affiliate you are able to access the EBSCO data base too! If you have not received information about how to access this then do pop an email through to the student rep email address.

## **COMING SOON**

Be sure to keep an eye on Facebook for the NZCCA page due to launch by mid July!!!! This will be a space to have discussion and network with students and counsellors around the country, and who knows the globe!!!

### **Scott Douglas**

Student Representative New Zealand Christian Counsellors Association

[nzccastudentrep@gmail.com](mailto:nzccastudentrep@gmail.com)

---

## **CONFERENCE COMMENTS**

- Speaker & workshops excellent & very thought provoking, encouraging.
- Thank you to those who planned, prepared and brought another conference into “being” for me a member of NZCCA to participate and enjoy the opportunity to learn & be encouraged by colleagues & Exec & David. Thank you.
- I was disappointed with the presentations by the Guest Speaker. I would have liked more focus on our work as counsellors and working safely and meaningfully with clients, incorporating some of the recent research and information that is being discussed within the therapeutic community. It would be helpful to have a wider range of books available. There is a wealth of books, not explicitly Christian, that are hugely helpful in the practice of counselling and psychotherapy within a Christian context.
- Excellent, well balanced workshop choices. A very well organised conference (as usual). Feel very privileged to be a member of NZCCA. Thank you. Well done!
- I would like to see speakers that reflect the direction and values of NZCCA – more inclusive, more focussed on developing our practice as Christian counsellors / therapists – with more clinical application.

- Good organisation, great choice of speaker, great topic. Maybe more time for reflection, prayer & worship time. Thank you for encouraging me in my work. Great workshops. Thank you.
- Deeply appreciate the compassion and care for Christchurch members. Great to catch up from people from your own city.
- This was my first NZCCA conference. I can honestly say this is the best conference I have ever attended. Genuine and enjoyable and honouring to God.
- Overall great experience & learning. Mind well fed. Stomach well fed. Awesome work everyone. Blessings for the future. David was insightful. Great learnings. Challenging thoughts. Loads of learning. Great job everyone.
- The best conference for counsellors I have attended.
- What a brilliant choice. Very well constructed and delivered incorporating creativity, brilliant minded theology and personal relationship delivery. Thank you David for pushing through your pain, sitting with it and meeting Papa face to face in it. I would have liked to hear more in depth examples e.g. how do we as counsellors work with suicide / divorce / self harm, real life issues in arena of counselling encounter. Spiritual abuse – no desire to engage – how to exist as counsellors in Christian lack of authenticity.
- Loved this venue. Great to have areas to sit and talk. Thanks for a great weekend. National Anthem great idea. Could we have more singing next year? Bookshop great.
- It is always good to gather as professionals who have a unifying belief system and are genuine in their faith. NZCCA is a great bunch of people.
- Thanks to all whose efforts once again provided us with a top quality conference. It was so good to be amongst Christian colleagues. God bless you all.
- Missed some belly laughs at banquet. Congrats on running such a good conference esp. given the trans-location. Very grateful for the broad-minded theology of David.
- Wonderful experience – sharing with and alongside Christian colleagues. As a Christchurch person and workshop leader felt very uplifted, encouraged, nurtured. The financial help (no Reg Fee) was much appreciated as I would not have been able to come. Thank you.

- Adrienne, I expressed my aloneness at Wellington – quite the opposite here. I think embracing Christchurch added to the “Encounter”. Has been very inspiring, informative & thoroughly enjoyable.



## **BUILDING A CLIENT BASE**

A core engagement of our work as counsellors is the incredible privilege we have in establishing a therapeutic relationship with our clients. Seeing the changes that occur in them during this process is very rewarding.

As counsellors we work in a variety of settings ranging from employment in a community agency through to being self employed. A question that is often asked is "how do I transition from being an employed counsellor, with an established client base, to being self employed and having to start from scratch in building my own client base?"

The practice that my wife and I have developed today is a long way from the days when we used to 'kick the children out' of the family room in order to see counselling clients! It is now an integrated, multidisciplinary team offering counselling and rehabilitation services. From my own experience building a client base in private practice takes time and commitment to see a future vision become reality. This may involve gaining experience in a community based agency, or agencies, in order that one's key areas of interest in counselling can be developed.

Once there is a realisation of your passions and strengths research what the community currently offers in terms of referral agencies and service provision. Once this has been completed identify what aspect of counselling may not be catered for in the community, and what you feel you can offer as a counsellor. Then begin a process of fulfilling this need through promoting your counselling services.

This may involve networking, and building relationship, with key service agencies in the community who would benefit from your counselling services. This process is best supported through a robust marketing and promotional programme that clearly establishes your "brand" as a counsellor in the marketplace. Organising brochures that promote your counselling services is

important as it is a way of advertising your counselling practice, in the community, and gives a professional edge to your services.

This can be further enhanced by the development of a web site as it gives prospective clients the opportunity to view your counselling services. Depending on the focus of your target clientele advertising on Facebook and Twitter is another approach to developing a client base using a distinctly modern marketing tool.

Word of mouth, however, is perhaps the most very reliable and effective advertising tool. This takes time as we get established as counsellors and relationally build the client base. Establishing credibility as a counsellor through this process is of paramount importance so that we are seen as a person of integrity who people can trust their lives with.

**Bruce McFadyen.**



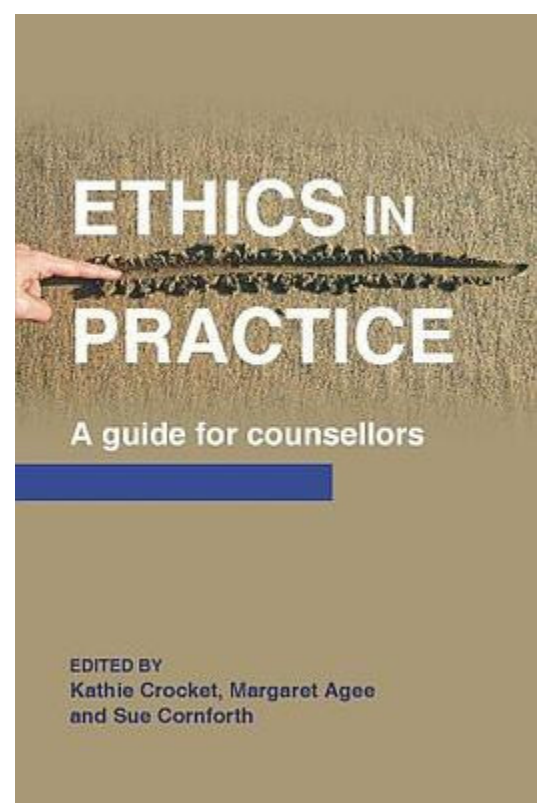
## **ETHICS CORNER**

### **Book review:**

**ETHICS IN PRACTICE: A GUIDE FOR COUNSELLORS.** eds Kathie Crocket, Margaret Agee and Sue Cornforth.

Instead of discussing relevant ethical issues, the focus for this newsletter is a book review. Ethics in Practice was first published earlier this year, and in my judgment, is an essential addition to your core counselling book collection. It is a book written by experienced New Zealand counselling practitioners, for New Zealand counselling practitioners.

As chapter one explains, a code of ethics is not something we make occasional reference to (often in times of difficulty), but instead “Ethics comes to life on a daily basis, in the actions we take as counsellors in our



counselling practices” (p.13). This applies in all of our interactions, with clients, supervisors, colleagues, and with associated practices such as record keeping and how we present ourselves as professionals. The link is made between ethics and our values as counsellors, so in this sense ethics are not a mandated set of rules, but a way of living by values we aspire to, which are reflected in ethical codes of conduct.

The book begins with a bi-cultural conversation around understanding of the Treaty of Waitangi/te Tiriti o Waitangi and the relationship to ethics with two distinctive voices in dialogue. Sensitivity to ever present culture is covered in the following chapter, and then follows a discussion around the philosophy of ethical practice. This can be compared and contrasted to the rationale for ethical practice in the NZCCA code, which has similar ideals, but viewed through a theological rather than philosophical lense. The book is based on the New Zealand Association of Counsellors code of ethics, but the values and principles are very similar to the NZCCA code, and it is easy to make comparisons and draw conclusions from these.

Ethics in practice has a chapter on using the code as a working document, implying a close familiarity with its contents, then goes on to apply this in a variety of situations, including marketing and advertising, and research. Following this are some very practical “how to” chapters, including note taking, and working specifically within various settings, such as school counselling. There are chapters on safe practice, and on working with ethical dilemmas.

The book is clearly referenced, with suggested further reading on the various topics addressed. I believe it is a valuable complement to Robert Ludbrook’s Counselling and the law (2003, NZAC,) providing practical and easily accessible information on safe and effective counselling practice in Aotearoa New Zealand.

The book is published and distributed by Dunmore Publishing Ltd, P.O. Box 25080, Wellington, [books@dunmore.co.nz](mailto:books@dunmore.co.nz)

Reviewer: **Joyce Carswell**

## **MEMBERSHIP**

It's only been a month since Conference so there is not a whole to report back. One significant event was to farewell Helen Torr who has been the long term stalwart of the committee. You will be sorely missed.

We continue to have a steady stream of applications for all categories of membership and our efforts to ask pertinent questions that help us determine suitability and help applicants provide a glimpse of themselves is proving effective.

The Executive is now moving to a new model of working and this will have a significant impact on membership. The day to day processes will move away from the Exec and more into the membership fold itself. Executive will have a 'reporting to' function rather than the burden of undertaking the work. Our efforts earlier in the year to streamline processes will facilitate a smoother transition.

The website section of FAQ's continues to be updated and is the first port of call for your questions. Please don't hesitate to still approach membership or the office for queries if this section does not provide the information you need.

On behalf of the team...

***Froukje Spaak (Chairperson), Kathy Clist, Bruce McFadyen and Scott Douglas***



## **ACC**

I write this report with a sense of hope and excitement. It has been a hard, painful road in the past few years and many counsellors and clients have been battered during the journey.

By now you will be aware that the first progress report by Dr Barbara Disley in the "Recommendations from the Independent Panels Review of the ACC's Sensitive Claims Clinical Pathway" has been released. You can read this on the ACC website.



A number of the recommendations have been and are continuing to be addressed. I write this two days prior to another SCAG meeting. There are some confidential drafts to be discussed and signed off at that meeting. A 'providers newsletter' is due to be sent out outlining the pending changes, and regional road-shows to be conducted.

Please contact me with any questions, concerns or comments. (In saying that, I am out of the country 3 July until 3 August.)

Sincerely,

**Paulette Berryman**

[berrypeople@xtra.co.nz](mailto:berrypeople@xtra.co.nz)

∞∞∞

From the ACC Website:

## **Encouraging Progress on ACC Sensitive Claims**

26 May 2011

An independent report for the ACC Board has found that ACC is making good progress implementing changes to its management of sensitive claims.

Prepared by Dr Barbara Disley, who chaired a review of ACC sensitive claims in 2010, the report finds that ACC has made progress in a number of important areas and those are already delivering improved services to clients.

ACC General Manager Denise Cosgrove said that, as a starting point, ACC had focused on four priority areas, which were:

- ensuring immediate access to support for clients, through the 16 hours of support sessions
- improving working relationships with people working in the sexual abuse field
- developing specific services for children and Maori clients
- putting in place a comprehensive work plan for the broader changes that were agreed

“We’ve worked really hard to implement changes that ensure our clients have fast access to effective support. These changes have also helped us strengthen positive relationships with clients and providers, and that will hold us in good stead for the future”, Ms Cosgrove said.

Report author, Dr Barbara Disley, said she was “satisfied with progress to date and had encouraged ACC to continue working closely with clients and providers to ensure the end-to-end process meets client needs, is timely and of a high quality. I will be reviewing progress again in 12 months and would expect to see all of the initial review’s recommendations being implemented by that time”.

The report notes that there has not yet been enough time to implement all of the review panel’s recommendations, but that ACC has done a good job prioritising the most important tasks first.

“The report does find some areas that still require attention and urges ACC to continue working with sector groups on those. We intend to do so”, Ms Cosgrove said.

To read the full monitoring report, see [Monitoring Report on the Implementation of the Recommendations from the Independent Panel’s Review of the ACC’s Sensitive Claims Clinical Pathway \(PDF316K\)](#) The link is on the ACC Website.

***Included with this newsletter is a Provider Update for your information.***

---

## We warmly welcome & congratulate the following Members and Subscribers:

### **Regular Members**

1. Andrea Dobbs, Hamilton
2. Bonnie White Payne, Whangarei
3. Nicola Scott-Savage

### **Provisional Members**

1. Karen Metcalf
2. Nina Holland
3. Linleigh Abel
4. Kim Fluhler
5. Greg Dunne
6. Amanda Chapman-Smith

### **Membership Upgrades**

4. Lesli Mancktelow
5. Christine Guyton
6. David Miller
7. Madeleine Hayden

### **Affiliates**

1. Ruth Coyle, Hamilton
2. Margy Le Heux, New Plymouth

### **Student Associates**

1. Tracey Smith
2. Shelley Gilmore
3. Peeramon Chansong
4. Joanne Hogben
5. Fran Anderson
6. Elaine Jacobsen
7. Carolyn Dempsey
8. Pauline Nagels
9. Roie Davenport
10. Anne Cederman
11. Judith Marshall
12. Skye Jennings
13. Nick Mulqueeney
14. Carolyn Skinner
15. Francesca Anema
16. Kristel Gillespie
17. Frances Lagi
18. Gay White
19. Deborah Solomon

## Notification of Membership resignations:

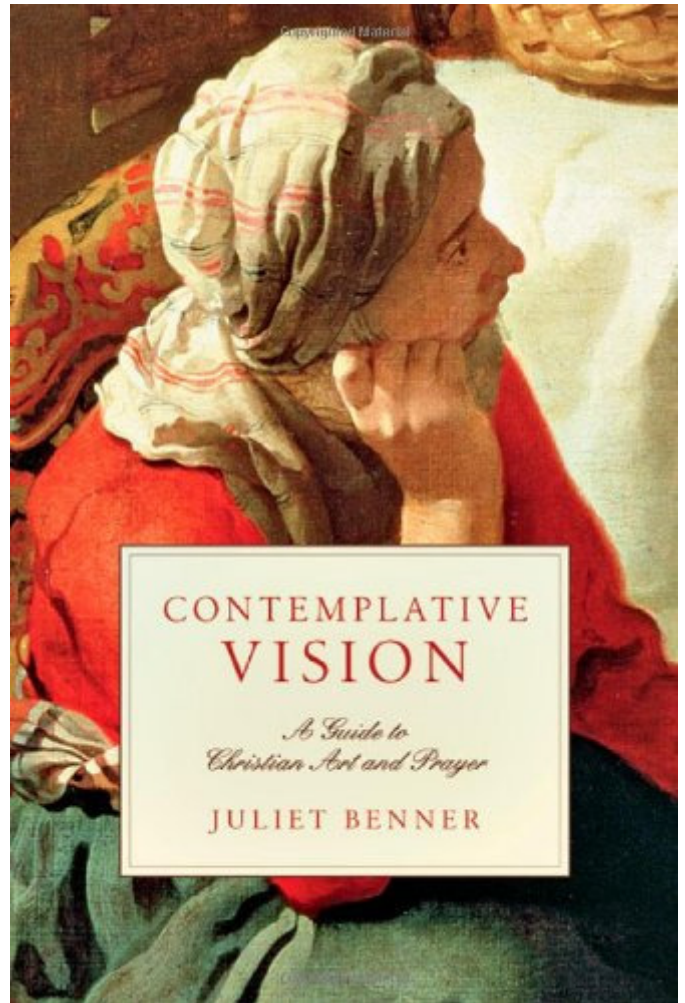
We have received the following resignations

1. Carol Kippenberger, Whangarei
  2. Ruth Coyle, Hamilton
  3. David Barton, Dunedin
  4. April Bent, Te Awamutu
  5. Margy Le Heux, New Plymouth
  6. Lyn Schumacher, Hamilton
  7. Caroline Belfield, Christchurch
-

## **BOOK REVIEW**

### **CONTEMPLATIVE VISION, A GUIDE TO CHRISTIAN ART AND PRAYER** by Juliet Benner (Inter Varsity Press)

What a delightful reflective book to journey through. For anyone who has had the privilege of participating in a workshop with Juliet Benner you will find the memories of the workshop come alive as she takes you on a journey through the reflections of the art works and artists. But more than that it is written in such a way that draws you into the scriptures and the “transformation of the Gospel” messages through her writing and through her use of the works of the artists.



The book is divided into three parts:  
Transformed Awareness  
Transformed Vision  
Transformed Living

Each part builds on the other so that the journey unfolds with greater enquiry and insight. A wonderful tool for personal devotions or for group devotions as there is sections to give reflections and discussions at the end of each chapter.

I fully recommend this as inspirational meditation and the great part is you don't have to know about art to embark on this journey with the author.

**Raewyn Diprose**



***If you have read a book that you have read and that you would like to review for the Newsletter, please contact the office.***

# NEWS FROM THE REGIONS

## NORTHLAND

WATCH THIS SPACE!!!

A number of our members in the Northland region have expressed an interesting in starting a regional meeting. If you would like further information please email the office: [info@nzcca.org.nz](mailto:info@nzcca.org.nz)

## Auckland

Hello to everyone,

Despite the wet, uninviting weather and the fact that Friday evenings tend to be 'blob' nights, we have been having great turnouts to branch meetings. Meetings are held on the first Friday bi-monthly at St Lukes Community Centre, 130 Remuera Rd at 7.30pm. (Supper provided. Cost: \$5.00 NZCCA members. \$3.00 students \$6.00 non-members).

At our April meeting we were very fortunate to have Dr Patte Randal share a sensitive, demystifying of psychosis. We were moved, informed and challenged by Patte's wealth of knowledge and experience.

Graeme Ure gave very practical suggestions for private practitioners on how to make a living out of counselling, at our June meeting. It is often difficult to think about what we do as a 'business' and Graeme's encouragement to think more laterally about services we could offer and how we could promote our practices more intentionally, was extremely practical.

We are pleased to be offering a seminar on 13 August on “Teenage depression and treatment”. Dr Barbara Bulkeley will be sharing knowledge gained from her research, with a lot of practical applications.

If you are on the Auckland Branch email list you should have received a flyer. Otherwise, details are posted on the NZCCA website under “Auckland branch”. We would love to offer this seminar as widely as possible so feel free to advertise it to other colleagues! If you require any further information, please contact anyone on the Auckland branch committee – (details on NZCCA website).

### **5 August branch meeting**

#### **Speaker: Rodger Jack**

Rodger is currently the operations manager of a mental health service. He has trained in family therapy, counselling and social work and is a contributing author in a New Zealand Social Work text. Rodger has led practice development in many different organizations including strengths-based practice in Child Youth and Family.

#### **Topic: “Your job as a counsellor when hope is elusive”.**

Sometimes we have clients who have little hope or belief that changes in their circumstances are possible. Rodger will bring some practical ideas about how to work effectively with these clients.

Please join us for what sounds to be a topic relevant to us all.

#### **Helen Florence**

Secretary

Branch meeting dates for 2011:

(All Fridays) 5 August, 7 October and 2 December

# Waikato

Greetings from the Waikato group.

A meeting/get together of interested counsellors held each Month has been going well with good steady attendance along with some new faces. It's so good to see the students mixing with us and getting to know where we all work from and the kind of work we might specialise in.

I have been asked to have a follow up workshop for people who attended the Healing Time Line back in March. This would offer a forum to talk over how it is being used and endeavour to help each other out with insight gained from using this new modality.

We have two Vision College students with us here at the Nest for their observation week. It is so good to see them coming through with all their aspirations and questions, and also the possibility of having one of them on placement for a year in the future.

Blessings from

**Marion Hunt**

Work 07 8434509.

Home, 07 8237494.

Email: [marion\\_hunt@nzf.salvationarmy.org](mailto:marion_hunt@nzf.salvationarmy.org).



**For information on the Gisborne meetings contact:**

Sarah McDonald ([beetlesarah@hotmail.com](mailto:beetlesarah@hotmail.com)) or

Bruce McFadyen ([brucem@oasistherapy.co.nz](mailto:brucem@oasistherapy.co.nz))



# Regional Report for BOP NZCCA

## June 2011

Tena koutou katoa NZCCAers

What's been happening in the Bay?

Since the last newsletter we have met twice, once at the beginning of April and then again at the beginning of June. Both of these meetings have been discussions: one facilitated by Karen Teasdale around an article that she had accessed from the EBSCO database and the other facilitated by Barbara Bulkeley around the topic of ethical practice and confidentiality when working in agencies and healthcare settings. There was some interesting discussion on both evenings. It was great having counselling trainees present at both meetings.

So what next?

August 2nd we have Andrew Tomlinson Director of St Peter's Family Centre speaking. And then September 17-18 we host our first ever weekend workshop with Margaret Bowater. We're very excited to have Margaret come and speak about Dream work and the registrations will be going out mid-July. October 4th we have James Arkwright coming and sharing his newly completed doctoral research with the group.

The core group are in good heart and committed to promoting NZCCA BOP. We gladly and enthusiastically welcome all new participants at our meetings held on the first Tuesday bimonthly. The meetings are at 23 The Drive, Bellevue at 7pm.

Arohanui

Suzanne Barthow (Lead Singer)

[s.barthow@bti.ac.nz](mailto:s.barthow@bti.ac.nz)

Phone 07 5791732 (Mon-Thurs)

# Manawatu

The Manawatu branch has been in recess since January, however there is good news.

Nicci Scott- Savage has offered to be the regional representative and is currently setting a date for a meeting in the near future.

Members will receive an invitation in due course.

After leading the branch since 1995, I am delighted to be handing this over to Nicci. Watch this space!!!

**Paulette Berryman**

# Wellington

Greetings

Wellington continues to offer local network meetings under the oversight of Frank Eijgenraam. To be included or if you have questions please contact Frank at [eijgenraam@clear.net.nz](mailto:eijgenraam@clear.net.nz)

Meetings are open to all, members and non-members, new and experienced counsellors and are hosted by Anne Costelloe at The Rock Church, 4 Glover Street, Ngauranga Gorge in the downstairs Cafe.

Our annual workshop is July 22nd on Object Relations Theory. To register or inquire please contact Anne [p\\_acostelloe@clear.net.nz](mailto:p_acostelloe@clear.net.nz) numbers are limited.

A really early alert... Conference is in Wellington in 2012... so please pencil your diaries in preparation.

Blessings

[Froukje\\_spaak@nzf.salvationarmy.org](mailto:Froukje_spaak@nzf.salvationarmy.org) work

[Froukje.spaak@clear.net.nz](mailto:Froukje.spaak@clear.net.nz) home

Ph 389 6566 work or 934 3835 home

# Canterbury & Southern Connections

## Greetings

On behalf of the Christchurch members, *a big thank you* for the love and support that came our way through the last newsletter, and especially through the Conference. Those of us who attended will never forget the many different ways people reached out to us in compassion and kindness

We continue to work our way through an unimaginable time of chaos and sadness, while living with the possibility of “the next big one”. The recent June 13 earthquakes seem to have taken many to a place of despair and exhaustion. Accumulated stress is taking its toll on the mental health of many in the city.

Our local branch get-togethers have been seriously restricted over the last 9 months, but we are currently in the process of planning events for the near future, and trying to find safe places where these events can be held.

Our next event is on Thursday 21 July. We will be focussing on how best to support each other, and to practise wise self-care through this Earthquake Season, as well as learning from one of our own members who survived the CTV building collapse

I write on behalf of all of us here in Christchurch: Please do keep remembering us! Please do keep praying for us. We have a long long way to go till we, along with our clients, reach a place of recovery, and move into our new reality. Meanwhile, it is an enormous challenge journeying with our clients as we too walk through this experience of collective trauma. As Christian counsellors, we continually wrestle with “where is God?” and “what does it mean to take his presence into the place of turmoil and fear and despair?” As the media and our city leaders regularly remind us in Christchurch, we must build strong relationships to get through. What a privilege is ours when a client is open to exploring a strong relationship with Loving Father God as well!

*O Lord, be gracious to us; we long for you. Be our strength every morning, our salvation in times of distress. The Lord will be the sure foundation for our times. Isaiah 33: 2,6*

Blessings!

Christine de Senna

# Top of the South - Nelson Area

Greetings from Nelson,

Our plan for this year is to meet quarterly. Our first meeting was in March 2011 and so we will keep you informed of our times together. For future dates contact Kathy at the email below.

Love and blessings

**Kathy King**

[kathy@richmondnewlife.org.nz](mailto:kathy@richmondnewlife.org.nz)

# CLASSIFIEDS



## Spiritual Growth Ministries

Aotearoa New Zealand

Spiritual Directors' Formation Programme 2012-2013

Are you interested in helping people grow in their relationship with God and already have people approaching you to talk about their spiritual life?

Our well regarded and comprehensive, 2 year part-time course will inspire and form you as an effective spiritual director.

The programme involves a blend of:

- Engaging in study of the theology and practices of Christian Spiritual Direction
- Deepening personal spiritual formation.
- Regular workshops conducted by experienced practitioners
- Supervised one-to-one spiritual direction practice

For details contact

The Coordinator, Barbara McMillan: [sgmtp@xtra.co.nz](mailto:sgmtp@xtra.co.nz)

Or visit our website: <http://www.sgm.org.nz>

Expressions of interest are welcome.

**Applications due by 20<sup>th</sup> AUGUST 2011**

Late applications may be considered.

---

## WORKING WITH YOUNG PEOPLE WHO ARE QUESTIONING THEIR SEXUAL IDENTITY

I have been asked to help someone who works with youth leaders and youth pastors throughout New Zealand. She has been approached on several occasions by them to ask if she knows of Christian counsellors trained and/or experienced in this area who are willing to accept referrals to see these young

people who often feel very isolated and full of questions about their identity and faith.

If you work in this area and would like your name to go on a list which I am compiling please get in touch with me at [b.bulkeley@bti.ac.nz](mailto:b.bulkeley@bti.ac.nz) or (07) 579-1740.

It would be great if we can find counsellors from a variety of places throughout New Zealand as not everyone with these concerns lives in Auckland, Wellington or Christchurch J

Many thanks,  
**Barbara Bulkeley**

---

### **Attention all Counsellors!**

This is a small business opportunity for you. I have recently published a beautiful parenting gift book with a photographer, Stephanie Defregger.

This book is called "did you know..." and is a wonderful photographic book on the importance of love on brain development in the early years. It combines essential messages and beautiful photographs with facts from neuroscience and attachment parenting. All in a simple easy to read format for the busy parent.

The book retails @ \$19.90 but we would like to offer it to you at **\$16.90** to sell to your clients or to Parenting groups in your community. We believe in the importance of this message and would love every new parent in NZ to know the truths of attachment and the effect this has on their child for the rest of their life. I have also found it helpful with clients when I am processing with them early attachment issues.

If you are interested in being a part of this project with us please contact us on [orderdidyouknow@gmail.com](mailto:orderdidyouknow@gmail.com).

with love

**Liz Maluschnig**

Reviews for the book:

Nathan Mikare Wallis, a NZ child development expert has said '*a beautifully clear and easy to read summary of the messages we have learnt from neuroscience over the last 20 years - in a format the busy new parent has time to read! Accurate, straight forward and straight to the heart of the matter.*'

Mary Grant, Co-founder Parents Inc. "*One of the most beautiful examples of sensitive responsiveness to another is the natural inclination of a mother to nurture her baby. From the earliest days, the rhythm of her heartbeat and the comfort of her arms provide a child with the building blocks of a good life.*

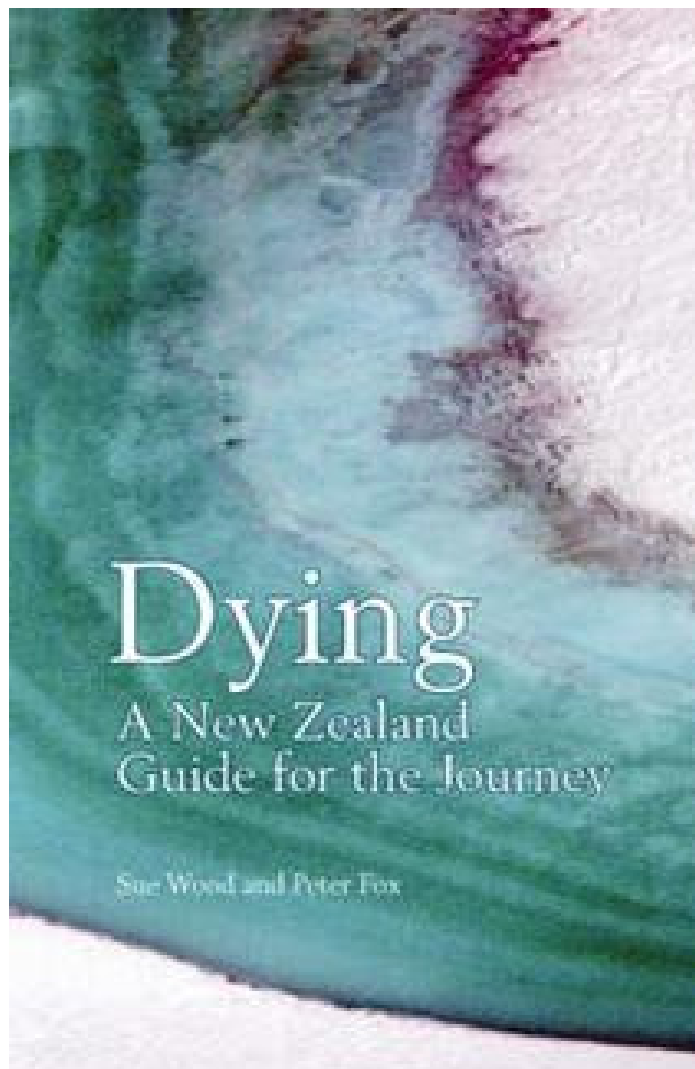
*In this delightful little book Liz Maluschnig and handmade photography combine their talents to show us how this relationship wires a child for a good future. They explain how, what we tend to know instinctively, is far more important than has sometimes been acknowledged.*

*Every parent it is hoped will read and absorb it with wonder and delight."*



# Dying: A New Zealand Guide for the Journey

Sue Wood and Peter Fox, with Karen McMillan



This book has been written to help anyone who is dying, and their family and carers.

The terminal stages of life are like all the rest, in being times for people to live through as richly as they can — but many special practicalities are likely to arise. Drawing on years of experience in hospice care and counselling, Sue Wood and Peter Fox discuss what they and others have found happening in the final stages of illness — what the dying person can expect, what others have found important to do — and generally how to respond positively and practically to the challenges of this difficult journey.

The authors also address the people involved in day-to-day care and nursing, as well as the professionals. Their aim is to help people deal positively with the difficulties they encounter, no matter how distressing, and to enhance the dignity and comfort of all concerned.

‘This is an amazing resource for anyone who is dying and for those caring for them, and is also essential reading for all health professionals. The approach is holistic, the writing sensitive, and the advice practical and easy to follow. It is a book to come back to again and again.’

— *Mary Schumacher, Chief Executive, Hospice New Zealand*

Wellington Sexual Abuse Network (WSAN) is a collaboration of



Wellington Rape Crisis,  
Wellington Sexual Abuse HELP and  
WellStop

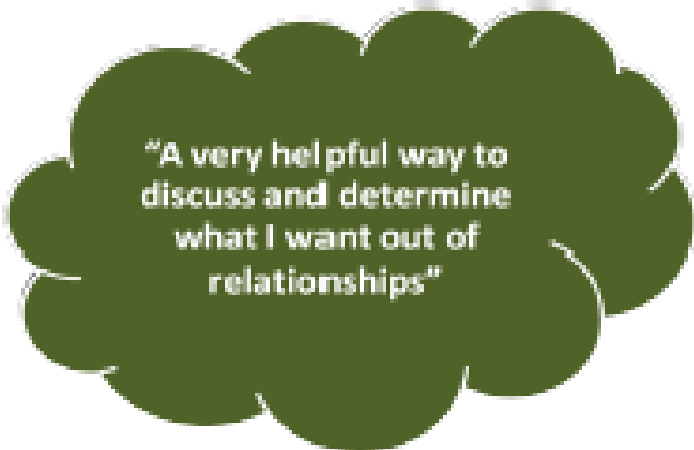
## **Relationships are tricky: “Introducing the Sexual Ethics Framework”**

**“Introducing the Sexual Ethics Framework”** provides strategies for using the Framework in therapeutic, clinical and social work settings.

It's difficult to find ways to talk about relationships which allow people to consider what they want and how they might negotiate that with someone else with respect.

The “Sexual Ethics Framework” can help negotiate how tricky this can be.

The Framework is a decision-making tool which underpins an innovative, strengths-based sexual and dating violence prevention programme called “Sex & Ethics.”



“A very helpful way to discuss and determine what I want out of relationships”



“It's useful to help explore what makes good and bad relationships.”

The Framework can be used with clients yet to have relationships, those wanting to improve their relationships, those recovering from abusive relationships or encounters, and those who want to change behaviour which is causing harm.

**When:** August 11<sup>th</sup>, 2011 9am to 4pm  
**Where:** Wellington  
**Cost:** \$250 incl GST  
**Facilitators:** Peter Vasbenter, Clinical Psychologist and  
Dianne Brooker, Counsellor and Trainee  
Psychotherapist

**Register [here](#). Please book early as there is a limit of 20 places.**

Phone: (04) 473 5355

Fax: (04) 473 5358

Email: [wsanprevention@xtra.co.nz](mailto:wsanprevention@xtra.co.nz)

P O Box 11731  
Manners St  
Wellington 6011

Two new and exciting books are now available in New Zealand.

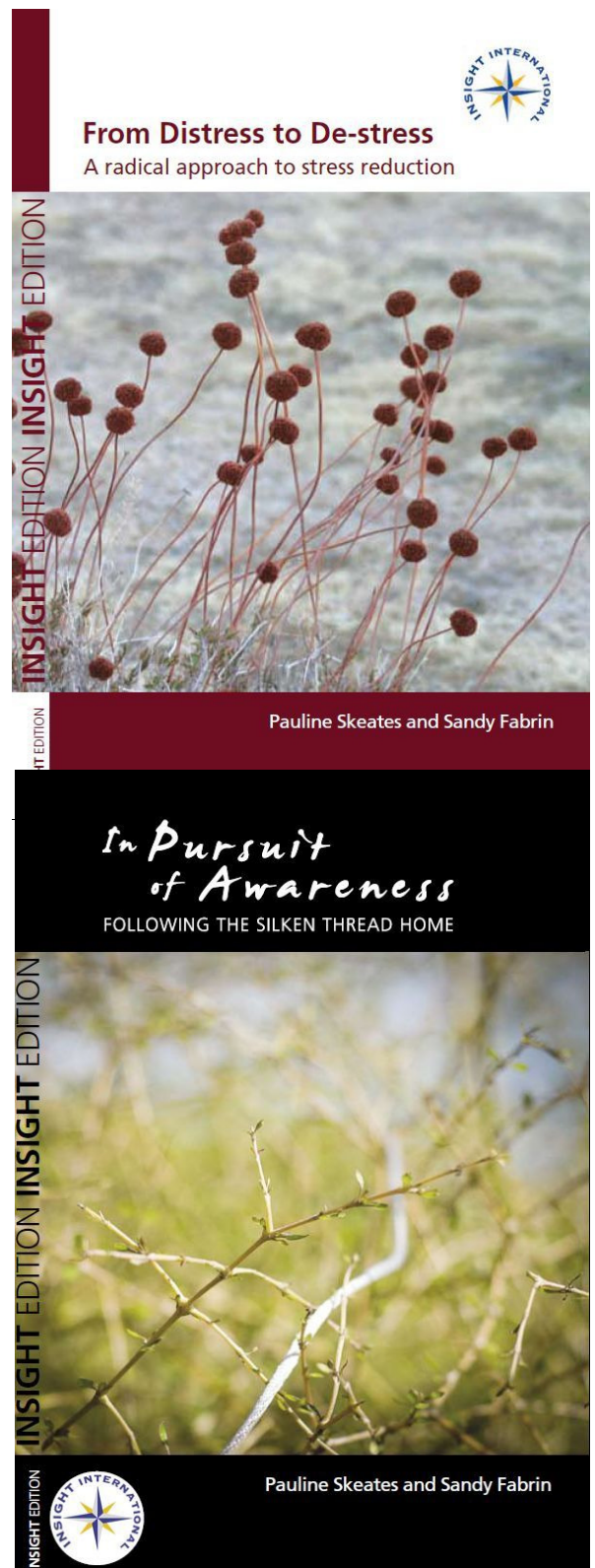
**From Distress to De-stress: a radical approach to stress reduction** teaches you how to not only survive but to thrive amongst the demanding pressures of everyday life. An excellent teaching tool for use in groups or for psycho-education to explain the fight/flight reaction to clients.

**In Pursuit of Awareness: following the silken thread home** will take you on a personal journey of deepening awareness using Insight Focused Therapy techniques. Learn how to experience the present moment in glorious 3D!

Both published in 2010.

These can be purchased for the price of \$25 each or \$120 for a set of 6. Please specify how many of each you would like to order

Order from Sandy Fabrin  
[sandyf@insightcounselling.co.nz](mailto:sandyf@insightcounselling.co.nz)  
or phone 09 3600600



## CIRCLE OF SECURITY PARENTING DVD TRAINING©

September 13<sup>th</sup> – 16<sup>th</sup> 2011

### **Do you work alongside children and their families?**

Circle of Security Parenting Training© is a newly developed DVD parent education program offering the core components of the evidence-based and internationally acclaimed COS® protocol. This 4-Day seminar trains professionals to use an eight chapter DVD to educate caregivers. The DVD and

manual can be used with families chapter by chapter or in multi-chapters to assist caregivers to better understand how attachment relationships can impact on child behaviour. The program presents video examples of secure and difficult parent/child interaction, healthy options in caregiving, and animated graphics designed to clarify principles central to COS®. Circle of Security Parenting© implements decades of attachment research in an accessible step-by-step process for use in group settings, home visitation, or individual counselling. This training is suitable for all professionals working with children and their families including social workers, counsellors, family/whanau workers, foster care givers, Plunket and other health care workers.

**The 4-Day training will promote the following skills:**

- Understanding the theoretical foundation of the Circle of Security®
- Building a secure base/safe haven relationship with caregivers
- Shifting caregiver focus from behaviour management to enhancing the quality of relationship
- Specific steps for building self-reflection in caregivers
- Use of video examples to support increased empathy in caregivers
- Offering new options to help caregivers manage emotions
- Step-by-step approaches for promoting secure attachment in children

**At the end of the 4-Day training, participants will receive:**

- Circle of Security Parenting© DVD
- Circle of Security Parenting Training© Manual
- Parent Hand outs
- License to use the above materials to teach Circle of Security Parenting© to caregivers. This DVD may only be used by those who have completed the 4-Day training. Completion of the 4-Day training does not grant permission to train others in the use of the DVD.

The Auditorium, Auckland City Hospital, Clinical Education Centre,  
Level 5, Building 32, Park Road, Auckland, New Zealand.

**Cost: NZ\$980.00**

**For more information** contact: [michelle@attuneconsult.co.nz](mailto:michelle@attuneconsult.co.nz) ,  
ph0275674120

**To Register** go to [www.circleofsecurity.net](http://www.circleofsecurity.net) (Payment to be converted to US Dollar)

---